

# TAPERED ROLLERS

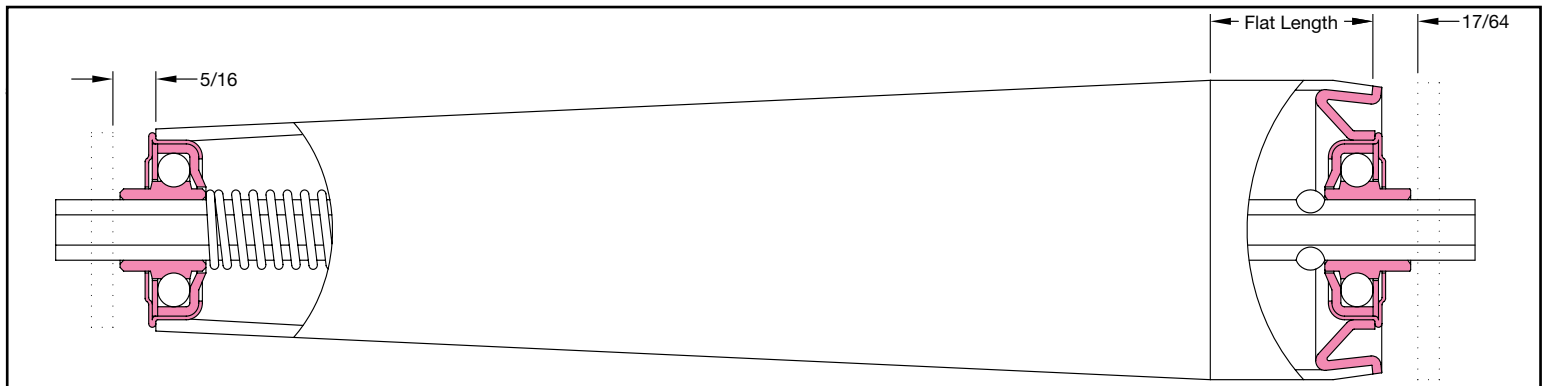
Heinrich Brothers, Inc.  
Phone 724.969.1188

## 2 1/2 in. O.D. to 1 11/16 in. O.D. x 14 ga. Tapered Rollers

Roller Part Number		Tube Material	Axle	Drive Options	Small Bearing Part Number	Large Bearing Part Number
Spring Retained	Pin Retained					
28697	28698	Mild Steel	7/16 Hex	Gravity	102052-O	102309
39044	39045	Mild Steel	7/16 Hex	Gravity	102053-GP	102310
28108	28107	Mild Steel	7/16 Hex	3 Grooves		
38450	38448	Mild Steel	7/16 Hex	40A22 Sprockets		
38449	38447	Mild Steel	7/16 Hex	50A17 Sprockets		

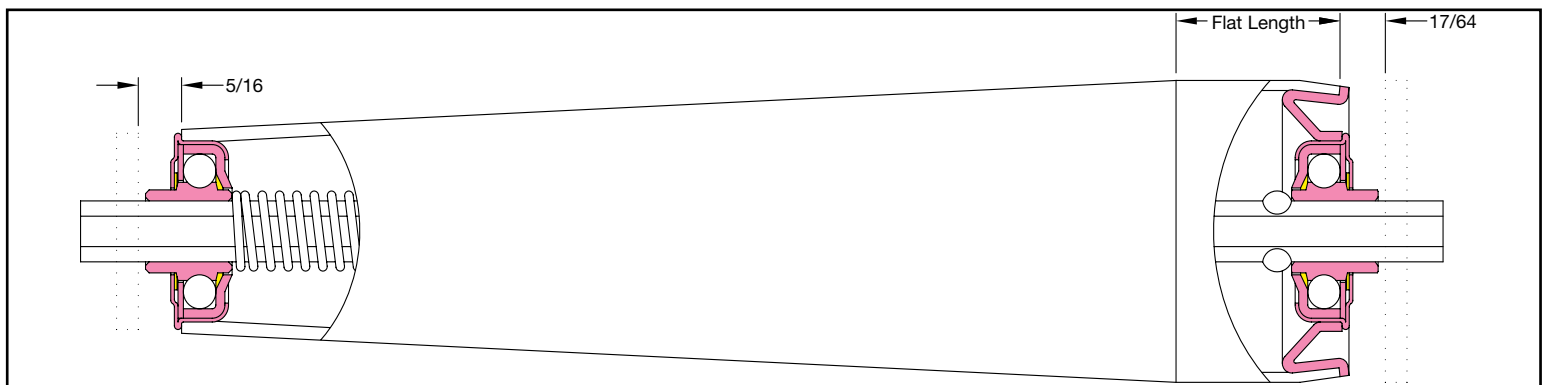
### Roller Capacity Chart (lbs.)\*

Between Frame (BF)	Bearing Part Number	Flat Length (Large End) Inches	Bearing Part Number	Flat Length (Large End) Inches
	102052-O 102309		102053-GP 102310	
13	288	2-11/16	288	2-11/16
15	287	1/2	287	1/2
17	287	2-1/2	287	2-1/2
19	287	4-1/2	287	4-1/2
21	286	7/8	286	7/8
23	286	2-7/8	286	2-7/8
25	286	4-7/8	286	4-7/8
27	285	1-5/8	285	1-5/8
29	285	3-5/8	285	3-5/8
31	265	5-5/8	265	5-5/8
33	245	2-5/32	245	2-5/32
35	227	4-5/32	227	4-5/32
37	210	6-5/32	210	6-5/32
39	195	8-5/32	195	8-5/32



102052-O Unground Press Fit

102309 Unground Crimped

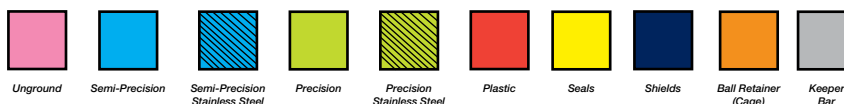


102053-GP Unground Press Fit

102310 Unground Crimped

\*The dimension above include 1/16" clearance between the extension on the bearing and the side frame at each end.

\*Roller Between Frame lengths available between values shown in the table.



### Standard Part Numbering System

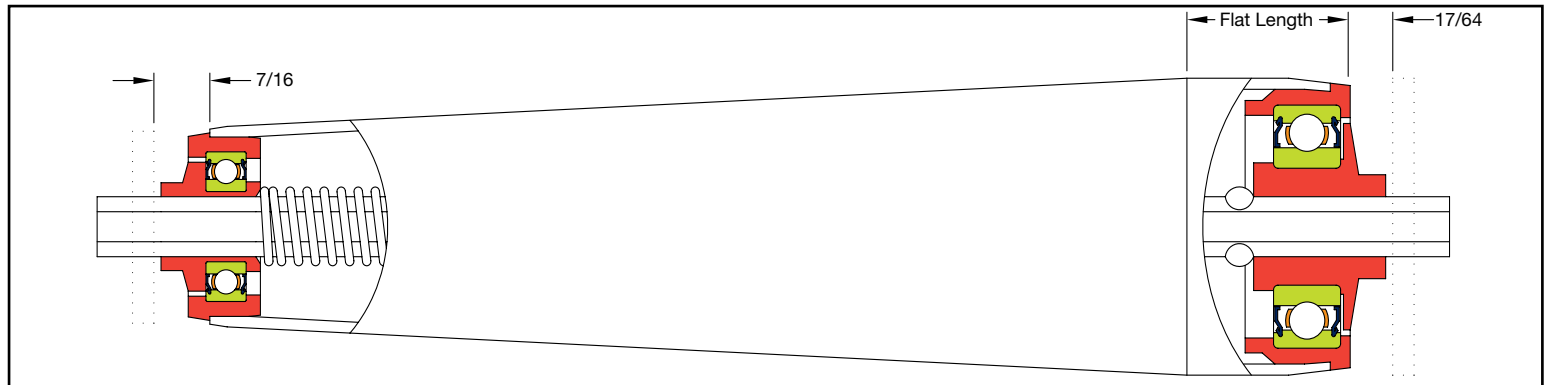
Example: 27369 - 17  
 Roller Part Number    BF

## 2 1/2 in. O.D. to 1 11/16 in. O.D. x 14 ga. Tapered Rollers

Roller Part Number		Tube Material	Axle	Drive Options	Small Bearing Part Number	Large Bearing Part Number
Spring Retained	Pin Retained					
43177	43178	Mild Steel	7/16 Hex	Gravity	114235-GP	114203-GP
43198	43199	Mild Steel	7/16 Hex	40A22 Sprockets	114092-GP	114091-GP
43196	43197	Mild Steel	7/16 Hex	50A17 Sprockets		

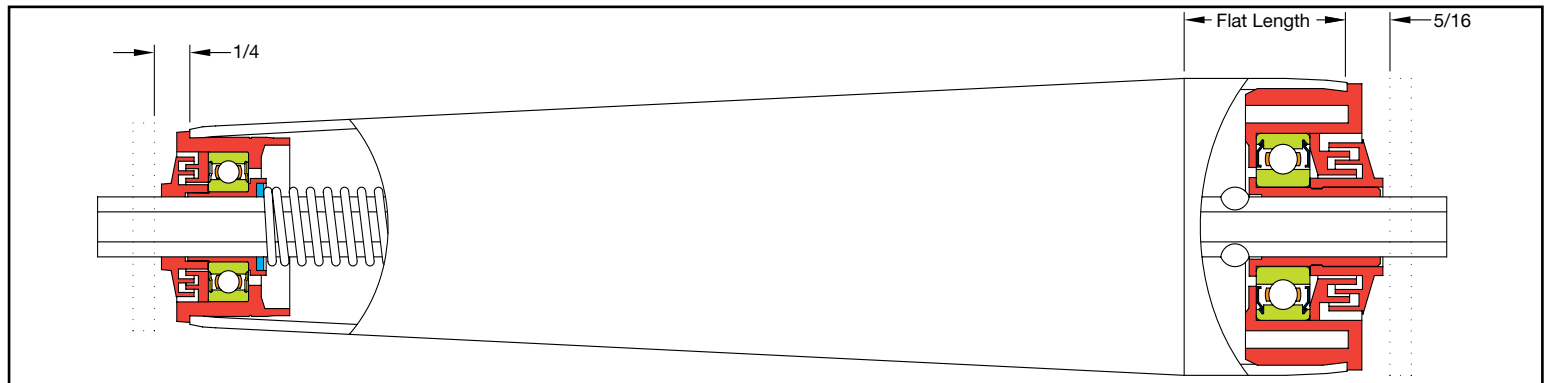
### Roller Capacity Chart (lbs.)\*

Between Frame (BF)	Bearing Part Number	Flat Length (Large End) Inches	Bearing Part Number	Flat Length (Large End) Inches
	114235-GP 114203-GP		114092-GP 114091-GP	
13	438	2-15/32	308	2-13/16
15	Special	Special	Special	Special
17	375	2-9/32	227	2-5/8
19	331	4-9/32	199	4-5/8
21	296	21/32	177	1
23	267	2-21/32	159	3
25	242	4-21/32	144	5
27	221	1-13/32	131	1-3/4
29	203	3-13/32	119	3-3/4
31	187	5-13/32	109	5-3/4
33	172	1-15/16	99	2-9/32
35	159	3-15/16	91	4-9/32
37	147	5-15/16	83	6-9/32
39	136	7-15/16	76	8-9/32



114235-GP Plastic Housed Precision

114203-GP Plastic Housed Precision



114092-GP Plastic Housed Precision

114091-GP Plastic Housed Precision

\*The dimension above include 1/16" clearance between the extension on the bearing and the side frame at each end.

\*Roller Between Frame lengths available between values shown in the table.

### Standard Part Numbering System

Example: 27369 - 17

Roller Part Number BF Unground Semi-Precision Semi-Precision Stainless Steel Precision Precision Stainless Steel Plastic Seals Shields Ball Retainer (Cage) Keeper Bar

# TAPERED ROLLERS

Heinrich Brothers, Inc.  
Phone 724.969.1188

## 2 1/2 in. O.D. to 1 11/16 in. O.D. x 14 ga. Tapered Rollers

Roller Part Number		Tube Material	Axle	Drive Options	Small Bearing Part Number	Large Bearing Part Number
Spring Retained	Pin Retained					
41817	Upon Request	Zinc Plated	7/16 Hex	Gravity	102053-GP	102310
<b>41815</b>	Upon Request	Zinc Plated	7/16 Hex	3 Grooves		
43181	43182	Zinc Plated	7/16 Hex	Gravity	114235-GP	114203-GP
43190	43191	Zinc Plated	7/16 Hex	2 Grooves		
43186	43187	Zinc Plated	7/16 Hex	3 Grooves		

\*Roller 41815 stock options available.

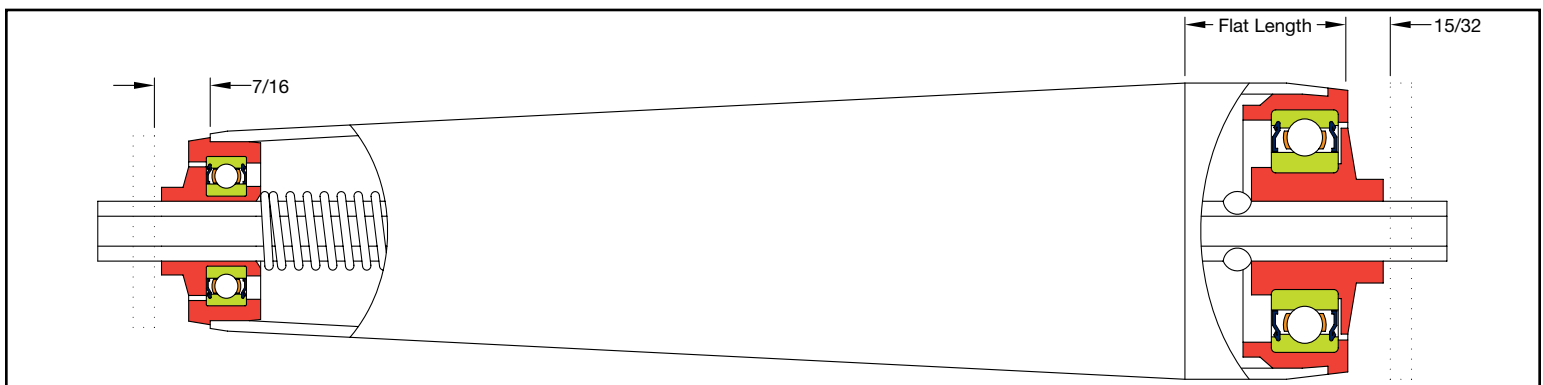
### Roller Capacity Chart (lbs.)\*

Between Frame (BF)	Bearing Part Number	Flat Length (Large End) Inches	Bearing Part Number	Flat Length (Large End) Inches
	102053-GP 102310		114235-GP 114203-GP	
13	288	2-11/16	438	2-15/32
15	287	1/2	Special	Special
17	287	2-1/2	375	2-9/32
19	287	4-1/2	331	4-9/32
21	286	7/8	296	21/32
23	286	2-7/8	267	2-21/32
25	286	4-7/8	242	4-21/32
27	285	1-5/8	221	1-13/32
29	285	3-5/8	203	3-13/32
31	265	5-5/8	187	5-13/32
33	245	2-5/32	172	1-15/16
35	227	4-5/32	159	3-15/16
37	210	6-5/32	147	5-15/16
39	195	8-5/32	136	7-15/16



102053-GP Unground Press Fit

102310 Unground Crimped

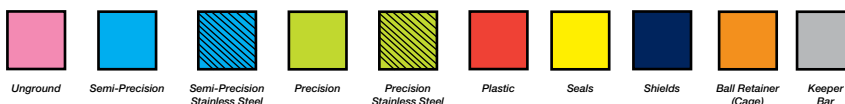


114235-GP Plastic Housed Precision

114203-GP Plastic Housed Precision

\*The dimension above include 1/16" clearance between the extension on the bearing and the side frame at each end.

\*Roller Between Frame lengths available between values shown in the table.



### Standard Part Numbering System

Example: 27369 - 17  
 Roller Part Number    BF