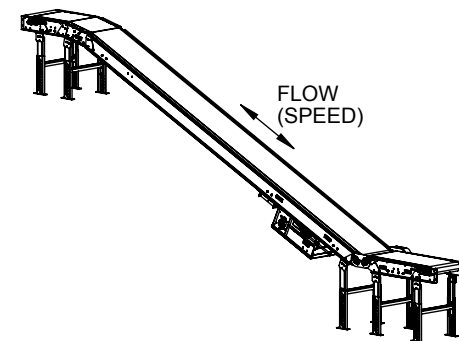


**SECTION A-A
TAKE-UP END**



**CENTER DRIVE, LEFT HAND SIDE (SHOWN)
RIGHT HAND SIDE OPPOSITE AS SHOWN**

SPECIFICATIONS

BELT WIDTH: 12", 18", 24", 30", 36"

BEGINNING ELEVATION: 7.5" - 99"

LENGTH: 120" - 600"

ENDING ELEVATION: 7.5" - 240"

SPEED: 15 - 150 FPM

FLOOR TO FLOOR HEIGHT: 0" - 240"

NOSEOVER LENGTH: 27" - 120"

INCLINED ANGLE: 10° - 25°

FEEDER LENGTH: 48" - 120"

BED: 6-1/2" x 1-1/2" deep x 1/8" formed steel pan.

BELT: Standard belt is Trackmate Roughtop with clipper lace. Optional belt is Trackmate Longitudinal groove. Other belt options available.

DRIVE: Standard drive is Center drive right hand. Optional drive is Center drive left hand.

FEEDER: Optional feeder available.

MOTOR: 3/4 HP through 2 HP. Energy efficient, inverter duty, and brake motors also available. Voltages include 120/1/60, 230/3/60, 460/3/60, 575/3/60 & DC Voltage.

SUPPORT CENTERS: Standard supports are for two floor applications. Optional supports include tall floor supports (120" maximum) and ceiling hangers for elevated sections.

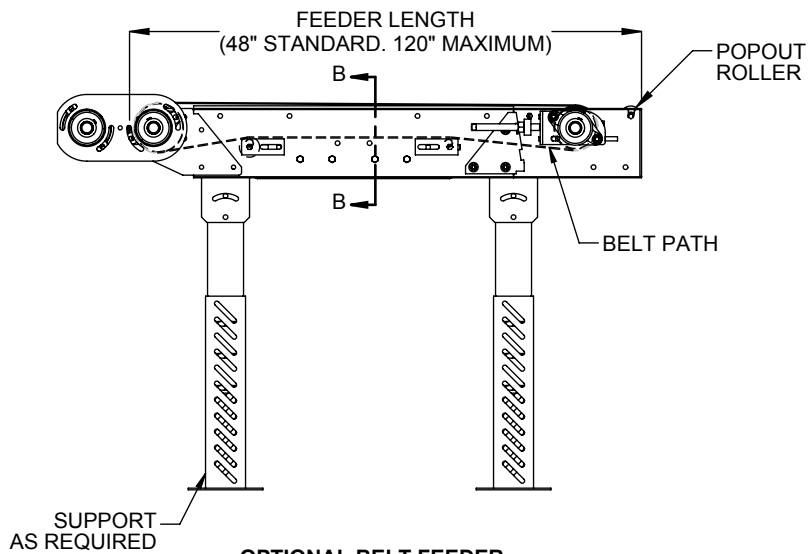
FRAME FINISH: Standard finish is OSHA safety blue powder. Optional colors include green, beige, gray, orange, black and yellow.

Model: FTFSB - Floor To Floor Slider Bed Conveyor

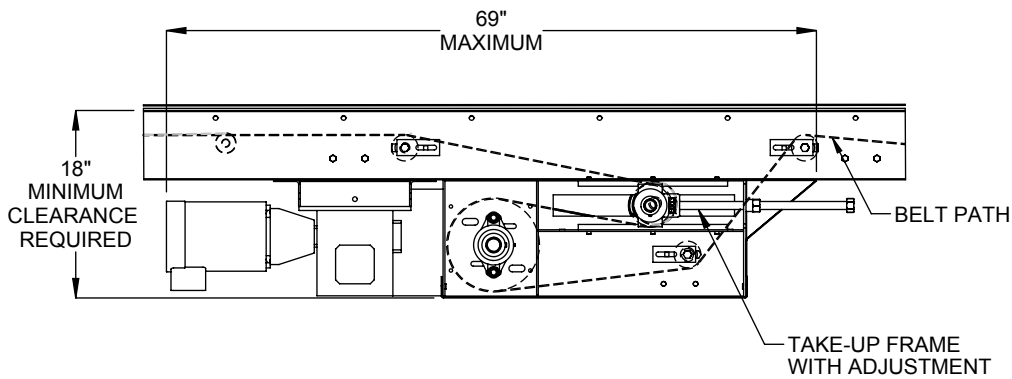
REV

0

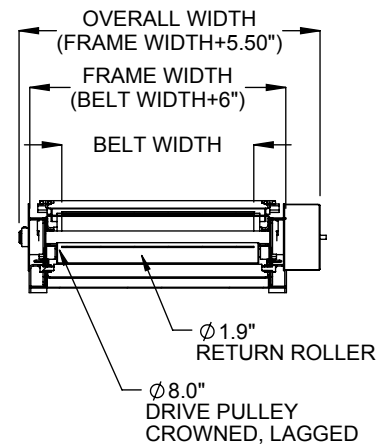




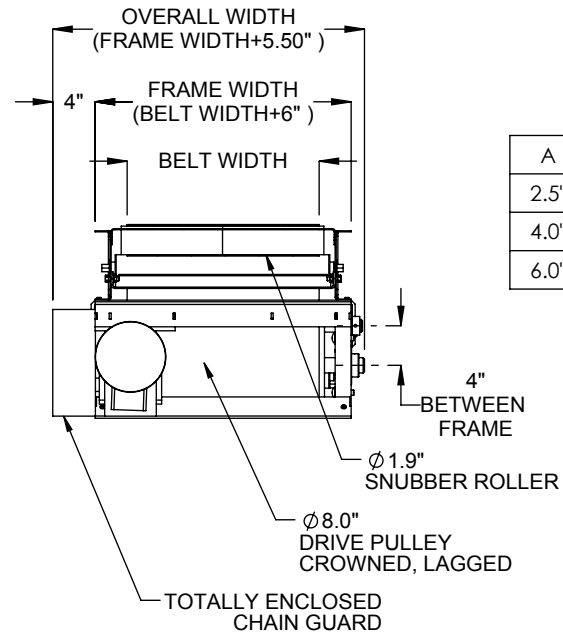
OPTIONAL BELT FEEDER WITH SLAVE CHAIN DRIVE



CENTER DRIVE OPTION



SECTION B-B FEEDER END VIEW



CENTER DRIVE END VIEW

LOAD CAPACITY @ 60 FPM & 25° INCLINED ANGLE (LBS)

HP	WIDTH				
	12"	18"	24"	30"	36"
3/4	240	235	230	225	220
1	320	315	310	305	300
1 1/2	485	480	475	470	465
2	650	645	640	635	630

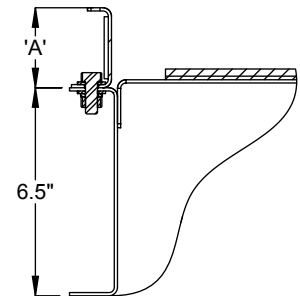
LOAD CAPACITY @ 30 FPM & 25° INCLINED ANGLE (LBS)

HP	WIDTH				
	12"	18"	24"	30"	36"
3/4	485	480	475	470	465
1	650	645	640	635	630
1 1/2	-	970	965	960	955
2	-	-	1295	1290	1285

MAXIMUM LOAD PER LINEAR FOOT OF CONVEYOR IS 100 POUNDS - NOT TO EXCEED CAPACITY ABOVE

GUARDRAIL OPTION

A
2.5"
4.0"
6.0"



A x 1-1/4" x 12ga BOLT ON CHANNEL